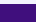
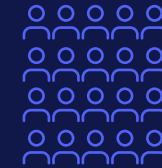
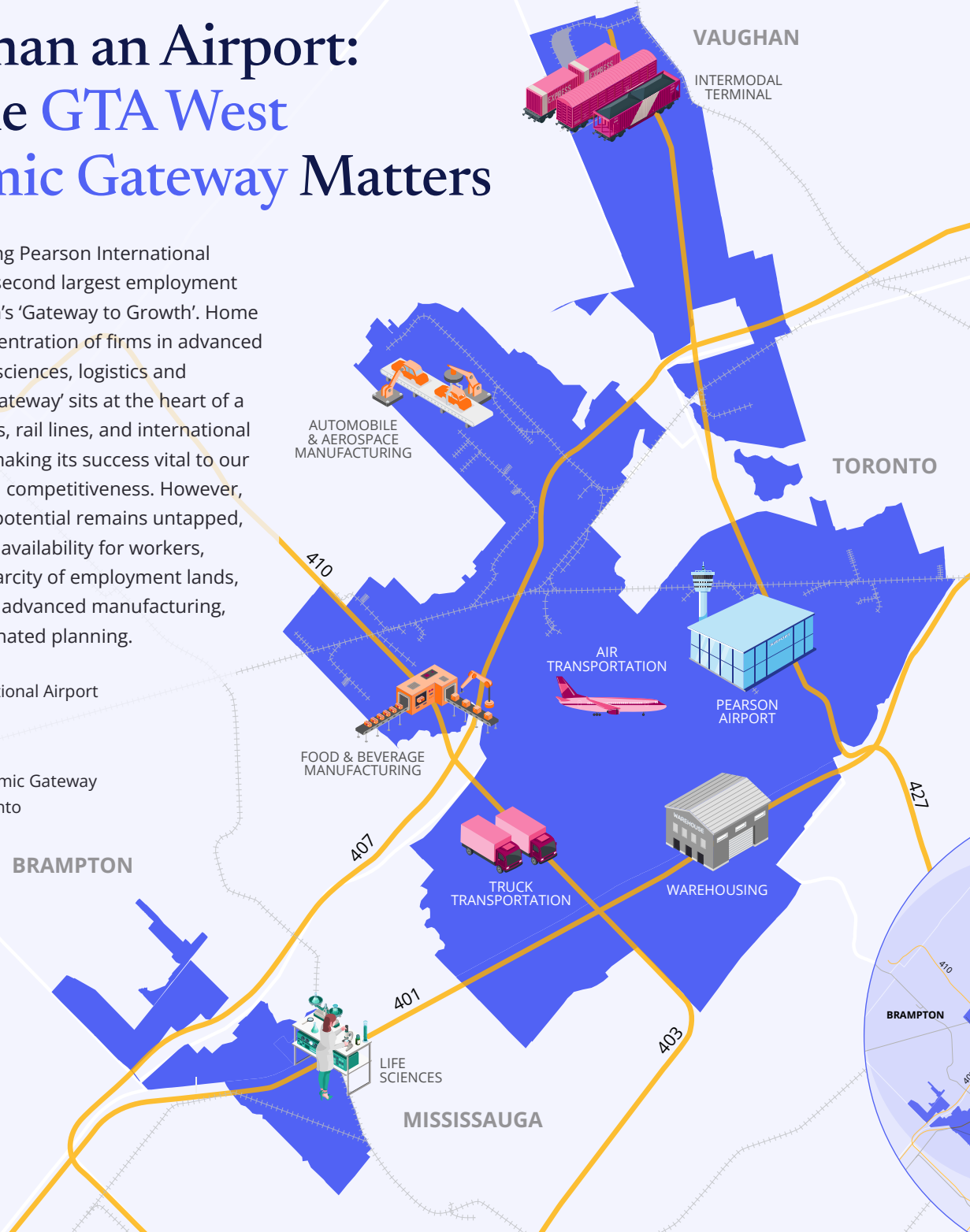


# More than an Airport: Why the GTA West Economic Gateway Matters

The area surrounding Pearson International Airport is Canada's second largest employment zone and our region's 'Gateway to Growth'. Home to a significant concentration of firms in advanced manufacturing, life sciences, logistics and warehousing, 'the Gateway' sits at the heart of a network of highways, rail lines, and international goods movement, making its success vital to our economy and global competitiveness. However, the Gateway's true potential remains untapped, restricted by transit availability for workers, road congestion, scarcity of employment lands, underinvestment in advanced manufacturing, and a lack of coordinated planning.

-  Pearson International Airport
-  Highway
-  Railway
-  GTA West Economic Gateway
-  Downtown Toronto



## 400K JOBS

Canada's second largest employment zone after downtown Toronto (550K)

IN ONTARIO, THE GATEWAY ACCOUNTS FOR:

**51%**  
of air transportation jobs

**36%**  
of warehousing and storage jobs

**25%**  
of pharmaceutical and medicine manufacturing jobs



The Gateway contributed **\$53.4 billion** to Ontario's economy



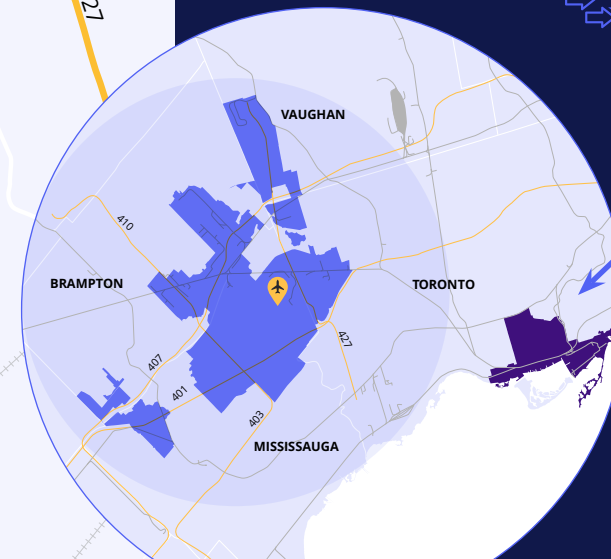
**1 in 10 large companies** in Ontario are located in the Gateway



Pearson Airport processes over **45% of Canada's air cargo**



**55% of workers** in the Gateway are immigrants, relative to 31% across Ontario



In 2021, **\$40.2 billion worth of exports** were moved through Toronto Pearson Airport

The Gateway is **6X the size of downtown Toronto** (161 Sq Km)

Learn More at [bot.com/economicgateway](https://bot.com/economicgateway)